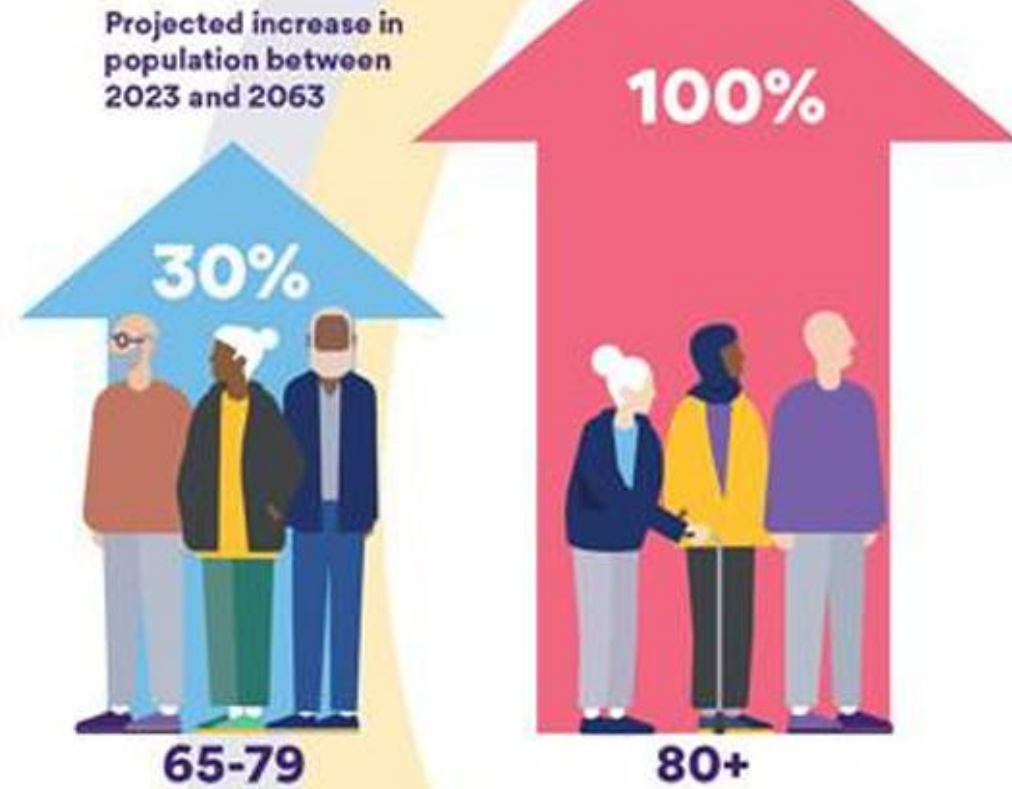


An aerial photograph of a coastal town, likely Torbay, showing a large harbor with a marina filled with boats. The town is built on a hillside overlooking the water, with numerous residential buildings and green spaces. The water is a vibrant blue-green color. A small boat is visible in the lower right part of the harbor.

# A Strategy for Housing in Later Life

Andrew Gunther – Principal Planning and Public Health Officer

**The changes in the age structure that we have seen over the last 40 years are set to continue over the next 40 years.**



For source see chart 2.02 here: <https://ageing-better.org.uk/our-ageing-population-state-ageing-2023-4>

# AGEING and HEALTH



## ▶ EVERY OLDER PERSON IS DIFFERENT



Some have the level of functioning of a 30 year old.



Some require full time assistance for basic everyday tasks.

Health is crucial to how we experience older age.

#yearsahead

# AGEING and HEALTH



## ▶ WHAT INFLUENCES HEALTH IN OLDER AGE

### INDIVIDUAL

### ENVIRONMENT THEY LIVE IN



Behaviours



Age-related changes



Genetics



Disease



Housing



Assistive technologies



Transport



Social facilities

#yearsahead

**TORBAY COUNCIL**



**Housing LIN**

*Connecting people, ideas and resources*

*“We are the 'go to' sharing network and consultancy for anyone working in housing, health and social care promoting solutions that enable everyone to live well in good quality housing”*

**TORBAY COUNCIL**


# Desk based assessment of housing supply in Torbay

# Survey

# Stakeholder focus groups

# Interviews

# Assessment of future demand for housing



**Views and aspirations of people in relation to housing in later life**

Tell us what matters to you and help us plan for future housing provision in Torbay

We know that people will make different decisions about where and how they live as they get older. Some will want to stay living in the same home, others will look to move to more manageable homes, and some will feel that housing designated for older people best suits their needs.

If you are aged 50 and over, we would like to know about your plans...

If you live in Torbay (Torquay, Paignton, Brixham) and are starting to think about where you want to live as you get older, we'd really love to hear from you. We want to hear from people currently living in all types of accommodation.

If you've already moved, we'd also really like to hear about your reasons for moving.


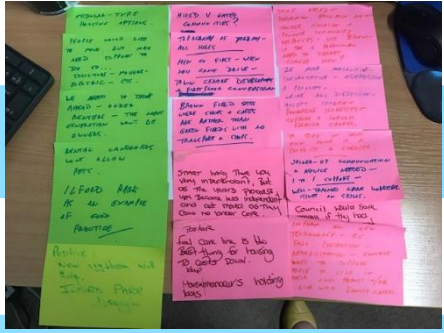
This is your chance to influence:

- future housing for older people;
- the sort of housing on offer to older people;
- the amount of housing that is built; and
- where it is built.


Please return your completed questionnaire by ...

To complete the survey online, please visit:


**Prize draw to win a £50 shopping voucher!**  
As a 'thank you' for participating in this survey you have the opportunity to be entered into a prize draw - please see page 15 for more information.

**TORBAY COUNCIL**



**Strategy for Housing in Later Life**



# Some key findings

- People aspire to a range of housing options, including staying at current home
- Potentially a larger market for local older people's housing in Torbay if right options provided
- A severe lack of comprehensive, accessible information and advice available to help people take the decision to move
- A sense of community is vital to wellbeing
- Size, features and location preferences
- Affordability - cost of moving, service charges, etc.
- Market stimulation required by Torbay Council

# Proposals and Commitments

# Remaining in current home

- The role of informal and peer to peer support
- Technology enabled care



# Remaining in future home

- Moving to homes that enable ongoing independence



# Improved and bespoke information, advice and moving support



# Extra care housing

- Expand provision
- Regeneration of town centres
- Near to transport and amenities



# Intergenerational

- Engagement
- Housing



# Lifetime homes and neighbourhoods



# Improvements to existing sheltered housing



# Dementia friendly housing



# Carers perspectives



# Community housing and cohousing



# Equalities and Diversity



Thank you!



[andrew.gunther@torbay.gov.uk](mailto:andrew.gunther@torbay.gov.uk)